

## Muddy Boot Statistics – A Short Introduction to [R]

### Objective:

This skill module is designed to provide you with an applicable knowledge of the programming environment [R]. [R] is a powerful tool for statistical computing and generating publication worthy graphics and best of all... it's FREE! Additionally, [R] has a tremendous amount of online resources to help you if and when you stumble. For best results visit ([www.r-project.org/](http://www.r-project.org/)) or simply Google® your problem (don't forget to include [R] with brackets!!!).

By the end of this skill module you should learn how to:

- Create Objects
- Import and Export Data
- Manipulate Data
- Perform Statistical tests
- Graph
- Script
- Learn How to get help

### Assignment:

1. To get started, email me ([attine9@gmail.com](mailto:attine9@gmail.com)) and I will send you the files we are using for this skill module. Create a file for these folders on your desktop.
  
2. Get online and go to the r-project and download [R]



CRAN  
[Mirrors](#)  
[What's new?](#)  
[Task Views](#)  
[Search](#)

About R  
[R Homepage](#)  
[The R Journal](#)  
Software  
[R Sources](#)  
[R Binaries](#)  
[Packages](#)  
[Other](#)

Documentation  
[Manuals](#)  
[FAQs](#)  
[Contributed](#)

The Comprehensive R Archive Network

Frequently used pages

#### Download and Install R

Precompiled binary distributions of the base system and contributed packages, **Windows and Mac** users most likely want one of these versions of R:

- [Linux](#)
- [MacOS X](#)
- [Windows](#)

#### Source Code for all Platforms

Windows and Mac users most likely want the precompiled binaries listed in the upper box, not the source code. The sources have to be compiled before you can use them. If you do not know what this means, you probably do not want to do it!

- **The latest release** (2009-12-14): [R-2.10.1.tar.gz](#) (read [what's new](#) in the latest version).
- Sources of [R alpha and beta releases](#) (daily snapshots, created only in time periods before a planned release).
- Daily snapshots of current patched and development versions are [available here](#). Please read about [new features and bug fixes](#) before filing corresponding feature requests or bug reports.
- Source code of older versions of R is [available here](#).
- Contributed extension [packages](#)

Questions About R



## R for Windows

This directory contains 32-bit binaries for a base distribution and packages to run on 1386/x64 Windows. See [here](#) for a 64-bit Windows port.

Note: CRAN does not have Windows systems and cannot check these binaries for viruses. Use the normal precautions with downloaded executables.

Subdirectories:

[base](#) Binaries for base distribution (managed by Duncan Murdoch)  
[contrib](#) Binaries of contributed packages (managed by Uwe Ligges)

Please do not submit binaries to CRAN. Package developers might want to contact Duncan Murdoch or Uwe Ligges directly in case of questions / suggestions related to Windows binaries.

You may also want to read the [R FAQ](#) and [R for Windows FAQ](#).

Last modified: April 4, 2004, by Friedrich Leisch

CRAN  
[Mirrors](#)  
[What's new?](#)  
[Task Views](#)  
[Search](#)  
About R  
[R Homepage](#)  
[The R Journal](#)  
Software  
[R Sources](#)  
[R Binaries](#)  
[Packages](#)  
[Other](#)  
Documentation  
[Manuals](#)  
[FAQs](#)  
[Contributed](#)



## R-2.10.1 for Windows

[Download R 2.10.1 for Windows](#) (32 megabytes)

[Installation and other instructions](#)

New features in this version: [Windows specific](#), [all platforms](#).

If you want to double-check that the package you have downloaded exactly matches the package distributed by R, you can compare the [md5sum](#) of the .exe to the [true fingerprint](#). You will need a version of md5sum for windows: both [graphical](#) and [command line versions](#) are available.

Frequently asked questions

- [How do I install R when using Windows Vista?](#)
- [How do I update packages in my previous version of R?](#)

Please see the [R FAQ](#) for general information about R and the [R Windows FAQ](#) for Windows-specific information.

Other builds

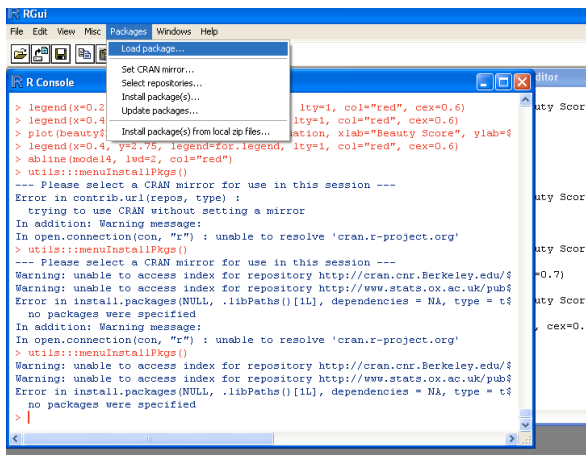
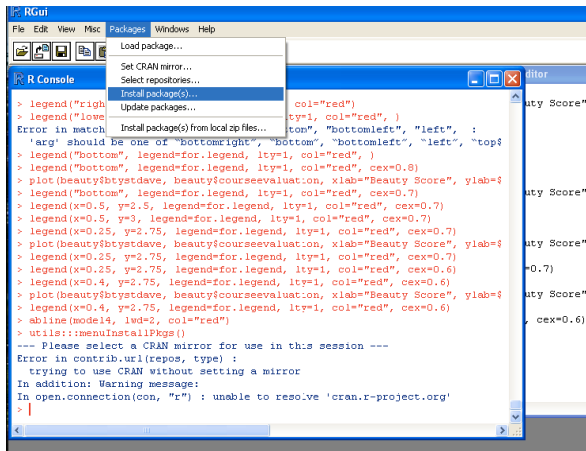
- Pre-release builds of R-2.11.0 (both 32 bit and 64 bit) are available on [the R-test](#) page. Please test them and report any problems!
- Patches to this release are incorporated in the [r-patched snapshot build](#).
- A build of the development version (which will eventually become the next major release of R) is available in the [r-devel snapshot build](#).
- [Previous releases](#)

Note to webmasters: A stable link which will redirect to the current Windows binary release is [<CRAN MIRROR>/bin/windows/base/release.htm](#).

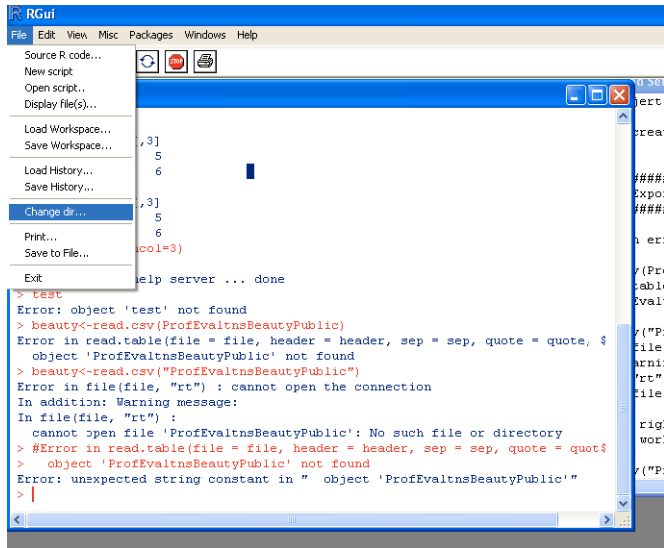
Last change: 2009-12-14, by Duncan Murdoch

CRAN  
[Mirrors](#)  
[What's new?](#)  
[Task Views](#)  
[Search](#)  
About R  
[R Homepage](#)  
[The R Journal](#)  
Software  
[R Sources](#)  
[R Binaries](#)  
[Packages](#)  
[Other](#)  
Documentation  
[Manuals](#)  
[FAQs](#)  
[Contributed](#)

3. Install and Load the package “maptools,” Australia should be the location that is first on your list. Because it is first, it gets packages most quickly and is usually your best bet. (lol)



4. Change your working directory to the file you created at the start of the course.



5. When interacting with [R] always use a text editor rather than the command window! For this skill module, you should open up the script saved in the file you created.
6. Now you are ready. Read through the script, run the commands (hint: ctrl+r) and explore! The script should have several problems to lead you along and reinforce important concepts. When you hit a road block DO NOT email me. Use these opportunities to use the aforementioned resources. You can also try inputting "?insert function here" in the command line to learn the specs on a function. All the data sets that you are required to use should be in the file you created. When you are completed, save your script along with the completed tasks and send it to me ([attine9@gmail.com](mailto:attine9@gmail.com)).

Good Luck!

Omar